

Harrisburg, Penna.

May 1957

Fall, 1907—Spring, 1908

WHOLESALE PRICE-LIST

For the Trade Only

TWENTY-THIRD YEAR—ONE HUNDRED ACRES

Kelsey's Rhododendrons Azaleas and other Hardy American Plants

Grown in the Carolina Mountains at 3,800 feet elevation

HIGHLANDS NURSERY, "Kawana," Saginaw P. O.

North Carolina

and SALEM BRANCH NURSERY, Salem, Mass.

Specialties at Highlands Nursery

- 23,000 Azalea lutea. 6 in. to 4 ft., clumps.
- 5,000 Azalea arborescens. American Tree Azalea.
- 10,000 Azalea vaseyi.
- 50,000 Rhododendron catawbiense. 6 in. to 6 ft., clumps.
- 10,000 Rhododendron punctatum. Small and large.
- 40,000 Rhododendron maximum. 3 in. to 4 ft., clumps.
- 20,000 Kalmia latifolia. 3 in. to 4 ft., clumps.
- 3,000 Tsuga caroliniana. The Rare Carolina Hemlock.
- 20,000 Tsuga canadensis. American Hemlock.
- 4,000 Pinus strobus. 4 to 8 ft.
- 4,000 Ilex opaca. American Holly.
- 20,000 Viburnums—cassinoides, acerifolium, alnifolium, dentatum, etc.
- 4,000 Stuartia pentagyna. American Camellia.
- 5,000 Chionanthus virginica.
- 3,000 Betula lutea. 6 to 8 ft.
- 50,000 Vaccinium macrocarpum. Clumps for evergreen border planting.
- 30,000 Stenanthium robustum. New introduction.
- 40,000 Lilium superbum. Fine bulbs.
- 10,000 Lilium carolinianum. New.
- 50,000 Trilliums. Rare species.
- 50,000 Hardy Herbaceous Perennials.

Specialties at Salem Branch Nursery

- 25,000 Cypripedium reginae (spectabile) crowns.
- 5,000 Specimen Rhododendrons — catawbiense, maximum and hardy hybrids.
- 2,000 Large Specimen Evergreens, Shrubs, Trees and Vines.

Always address

HARLAN P. KELSEY, Owner, Salem, Mass.

Gift of

KELSEY'S Hardy American Plants
Rhododendrons and Azaleas

Information

HIGHLANDS NURSERY SHIPMENTS are made from Pineola, N. C., freight station, and **prices in this list are made on this basis.** Freight and express rates have been reduced, and we will gladly quote rates. Via Norfolk Steamship Lines, deliveries to northern and eastern points are quick and rates low.

SALEM BRANCH NURSERY SHIPMENTS are made from Salem direct, and our **special price-list must be used in ordering.** Prices are about 25 per cent higher than for similar stock at our main **Highlands Nursery.** A fine stock of specimen Rhododendrons, Azaleas, Conifers, etc., may be seen at Salem Branch Nursery, and deliveries to eastern points rarely take more than a day or two.

SHIPMENTS OF "COLLECTED" RHODODENDRON MAXIMUM AND KALMIAS are from our special fields in Pennsylvania or the southern mountains, depending on destination and quality of stock desired. The best clumps come from the South from high altitudes.

"COLLECTED" RHODODENDRON CATAWBIENSE AND RHODODENDRON PUNCTATUM come only from the South.

OUR NURSERIES ARE UNIQUE, being the first and only to grow Native American Ornamentals, and we now have the only large and complete stock of Hardy American Rhododendrons, Azaleas, Kalmias and like plants in existence.

THE LOCATION OF HIGHLANDS NURSERY also is unique, an elevation of 3,800 feet insuring unquestioned hardiness.

Terms

TERMS cash or satisfactory reference from unknown parties. Accounts due first of each month, unless by special arrangement.

PACKING charged at cost.

OUR EXPORT SHIPMENTS reach the most remote countries in perfect condition; we have exported for over 20 years and know how to pack.

SEND FOREIGN REMITTANCES by Postal Money Order, drawn on Salem, Mass., postoffice; or by New York or Boston Exchange. An American dollar equals 4 shillings, 4 marks, or 5 francs.

CLAIMS must be made on receipt of goods. If there is any mistake or fault on our part, it will be gladly rectified. All shipments travel at consignee's risk, and transportation companies must be held liable for damage in transit.

SHIPPING BEGINS IN SEPTEMBER, when we send out large Rhododendrons, Kalmias and other evergreens, and bulbs and herbaceous plants, general stock going out in October and November and in spring from about March 1 to May 15. Give shipping instructions, unless you wish to leave it to us. **We use our best judgment, but assume no risk.**

A CERTIFICATE OF INSPECTION accompanies shipments.

HARDY STOCK ONLY is offered in this Catalog, unless specially noted.

A BEAUTIFULLY ILLUSTRATED DESCRIPTIVE CATALOG is mailed on request.

ESTIMATES made on lists of nursery stock desired by parks, cemeteries and public institutions.

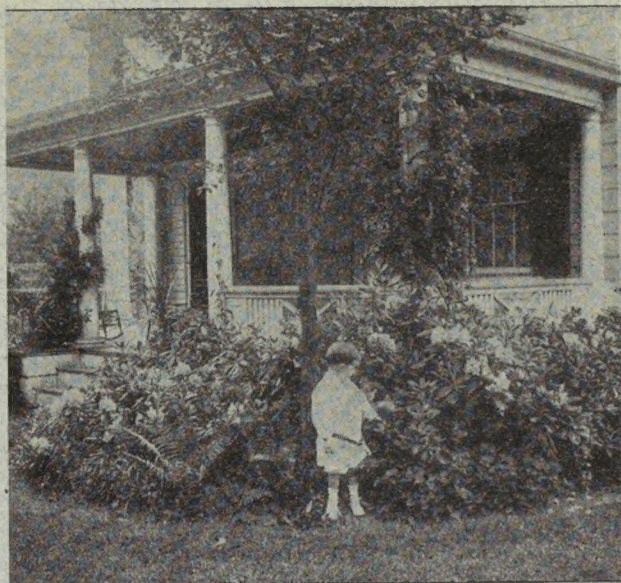
Always address,

HARLAN P. KELSEY, Owner

Cable Address
KELMONT-SALEM

SALEM, MASS.

September and October is the time to successfully ship
and plant Lilies, Trilliums and Cypripediums

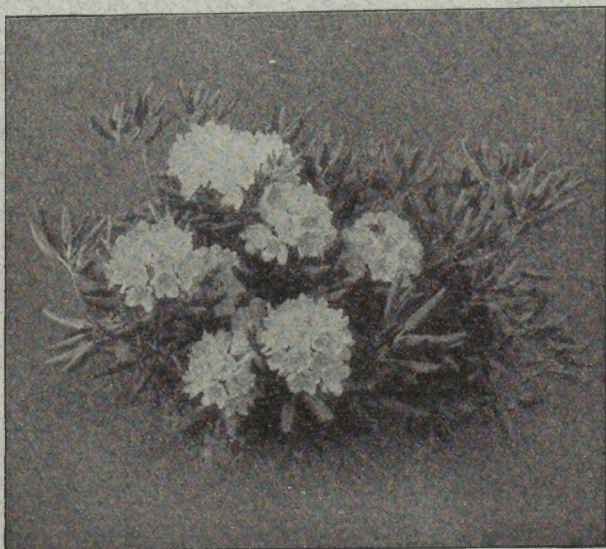


Rhododendron catawbiense. The proper way to mass it with low ferns and evergreens for edgings. Photographed at Salem, Mass.

50,000 (TRUE SPECIES) *Rhododendron Catawbiense*

FROM 3-INCH PLANTS WITH BALLS, TO 6-FOOT CLUMPS

This is not the common imported "seedling Catawbiense" so-called, which is a half-hardy hybrid with little true *Catawbiense* blood in it. The true *Catawbiense* grows only in the high southern Alleghenies and is the finest of all *Rhododendrons* considering its extreme hardiness and remarkable texture of foliage—a deep shiny green, far superior to *Maximum*.



Clump of *Rhododendron catawbiense* (true). Showing method of growing bushy clumps with 15 to 50 stems. Photographed at Salem Branch Nursery

KELSEY'S Hardy American Plants Rhododendrons and Azaleas

RHODODENDRON CATAWBIENSE, continued

For massing there is no hardy broad-leaved evergreen equal to it for the northern United States. It is a free-bloomer with large bright red-purple trusses, in marked contrast to the blue-purple of the half-hardy hybrid noted before.

PRICES

Packing charged at cost, except clumps in car-lots, f. o. b. All plants are bushy with balls (except collected **seedlings**) and clumps have diameter corresponding to height with many stems, and are mostly heavily budded. The larger clumps for center of mass planting should not be feathered to the ground for best effects, but have thick bushy tops. Special selections are charged for extra and we can supply perfect specimens for any situation.

Shipment from Highlands Nursery

BUSHY PLANTS	Nursery-grown			Collected		
	Per 10	100	1,000	Per 10	100	1,000
3 to 6 inches.....	\$0 50	\$4 00	\$30 00	\$0 40	\$2 00	\$15 00
6 to 9 inches.....	1 00	8 00	65 00	75	5 00	40 00
9 to 12 inches.....	1 50	12 00	95 00	1 00	7 00	60 00
1 to 1½ feet.....	2 25	18 00	160 00	1 50	10 00	85 00
1½ to 2 feet.....	3 50	28 00				
CLUMPS						
6 to 9 inches.....	2 25	20 00				
9 to 12 inches.....	3 50	30 00		2 25	20 00	180 00
1 to 1½ feet.....	7 00	60 00	480 00	4 00	35 00	325 00
1½ to 2 feet.....	12 00	100 00	900 00	6 50	60 00	450 00
2 to 3 feet.....	20 00	160 00	1250 00	10 00	90 00	800 00
3 to 4 feet.....	35 00	300 00		20 00	180 00	1700 00
4 to 5 feet.....	45 00	and upward		40 00	350 00	

Shipment from Salem Branch Nursery

Finest clumps transplanted, mostly heavily budded.

	Per 10	100
1 to 1½ feet.....	\$10 00	\$90 00
1½ to 2 feet.....	15 00	140 00
2 to 3 feet.....	25 00	225 00
3 to 4 feet.....	45 00	400 00
4 to 5 feet.....	60 00	550 00



The way to grow *Rhododendron catawbiense* (true) bushy from the ground up.
Photographed at Salem Branch Nursery



The hardiest Hybrid Rhododendrons growing at Salem Branch Nursery

40,000 Rhododendron maximum

10,000 Rhododendron punctatum

20,000 Kalmia latifolia

13,000 Leucothoe catesbaei

These splendid hardy broad-leaved evergreens together with *R. catawbiense*, are the basis of any successful mass planting for winter effects. If you don't know how to advise your customers so they may grow these choice evergreens as easily and successfully as common shrubs, write us. **There is a secret**, and 23 years' experience in growing ericaceous plants enables us to "tell how." Our stock is immense and cannot be duplicated elsewhere in quantity or quality. The best "collected" clumps of *R. maximum* and *Kalmia* come from North Carolina, though we ship a fine grade from special sources in the northern Alleghenies. Freight rates from southern points are reduced and we gladly quote you to any point, and give the information you want about "car-lots."

RHODODENDRON MAXIMUM

CONDITIONS AND CHARACTER OF STOCK ARE THE SAME AS FOR RHODODENDRON CATAWBIENSE

Shipment from Highlands Nursery

BUSHY PLANTS	Nursery-grown			Collected		
	Per 10	100	1,000	Per 10	100	1,000
3 to 6 inches.....	\$0 40	\$2 50	\$20 00		\$1 50	\$15 00
6 to 9 inches.....	60	4 50	30 00	\$0 50	2 50	20 00
9 to 12 inches.....	1 00	7 00	60 00	75	4 00	35 00
1 to 1½ feet.....	1 50	12 50	100 00	1 00	7 00	50 00
1½ to 2 feet.....	3 00	20 00	180 00	1 50	10 00	90 00
2 to 3 feet.....	5 00	40 00	320 00			
CLUMPS						
9 to 12 inches.....	3 50	30 00				
1 to 1½ feet.....	5 00	45 00		3 50	30 00	225 00
1½ to 2 feet.....	8 00	70 00		5 00	45 00	400 00
2 to 3 feet.....	12 50	115 00		9 00	70 00	600 00
3 to 4 feet.....	30 00	250 00		16 00	140 00	1000 00
4 to 5 feet.....				30 00	200 00	
5 to 6 feet.....				50 00	400 00	

NOTE.—The price for collected clumps from northern sources the same.

KELSEY'S Hardy American Plants Rhododendrons and Azaleas

Shipment from Salem Branch Nursery

CLUMPS, Nursery-grown only.		Per 10	100
1½ to 2 feet.....		\$10 00	\$90 00
2 to 3 feet.....		16 00	150 00
3 to 4 feet.....		40 00	325 00
4 to 5 feet.....		50 00	425 00

RHODODENDRON PUNCTATUM

Very different from Catawbiense or Maximum, both in foliage and flower, and the growth is distinct and graceful. The rose-colored blossoms are borne in greatest profusion in May or early June. Fine for borders of mass plantings or for rocky slopes and cliffs, as it stands exposure unusually well.

Shipment from Highlands Nursery

BUSHY PLANTS, Nursery-grown only.		Per 10	100	CLUMPS		Per 10	100
6 to 9 inches.....	\$1 25	\$10 00		9 to 11 inches.....	\$4 00	\$30 00	
9 to 12 inches.....	2 00	15 00		1 to 1½ feet.....	8 00	60 00	
1 to 1½ feet.....	3 00	25 00		1½ to 2 feet.....	15 00	120 00	
1½ to 2 feet.....	5 00	40 00		2 to 3 feet.....	30 00	240 00	
				3 to 4 feet.....	50 00		

HARDY RHODODENDRON HYBRIDS

Shipment from Highlands Nursery

Strong bushy plants, 1½ to 3 feet, in named varieties, \$1.50 to \$2.50 each.

KALMIA LATIFOLIA

All are well furnished and left with fine balls, the larger clumps usually budded. Conditions same as for *Rhododendron catawbiense*.

Shipment from Highlands Nursery

	Nursery-grown			Collected		
	Per 10	100	1,000	Per 10	100	1,000
3 to 6 inches.....	\$0 40	\$3 00	\$20 00		\$1 50	\$15 00
6 to 9 inches.....	75	5 00	35 00	\$0 50	2 50	20 00
9 to 12 inches.....	1 25	8 00	60 00	75	4 00	35 00
1 to 1½ feet.....	1 75	12 50	100 00	1 00	7 00	50 00
1½ to 2 feet.....	3 00	25 00	200 00	1 50	10 00	90 00

Shipment from Highlands Nursery

CLUMPS	Nursery-grown			Collected		
	Per 10	100	1,000	Per 10	100	1,000
9 to 12 inches.....	\$3 00	\$25 00				
1 to 1½ feet.....	4 50	40 00		\$3 50	\$30 00	\$225 00
1½ to 2 feet.....	8 00	70 00		5 00	45 00	400 00
2 to 3 feet.....	17 50	140 00		9 00	70 00	600 00

NOTE.—Price for collected clumps from northern sources same as above.

Shipment from Salem Branch Nursery

Fine clumps, diameter corresponds to height.

CLUMPS	Per 10	100
1 to 1½ feet.....	\$7 00	\$60 00
1½ to 2 feet.....	12 50	100 00
2 to 3 feet.....	25 00	200 00

LEUCOTHOE CATESBAEI

Shipment from Highlands Nursery

	Nursery-grown			Collected		
	Per 10	100	1,000	Per 10	100	1,000
6 to 12 inches.....	\$0 75	\$6 00	\$50 00	\$0 50	\$3 50	\$25 00
1 to 1½ feet.....	1 25	10 00	80 00	1 00	6 00	50 00
1½ to 2 feet.....	2 00	15 00		1 50	9 00	70 00
CLUMPS						
1 to 1½ feet.....	2 50	20 00		2 00	12 00	100 00
1½ to 2 feet.....	3 50	30 00		3 00	20 00	175 00

KELSEY'S Hardy American Plants Rhododendrons and Azaleas

DECIDUOUS TREES

	Per 10	100	1,000
Acer negundo. Box Elder. 2 to 4 ft.....	\$0 75	\$6 00	
4 to 5 ft.....	1 00		
pennsylvanicum. Striped Maple. 1 to 2 ft.....	1 00	8 00	
2 to 3 ft.....	1 50	12 00	
3 to 4 ft.....	2 00	17 50	
saccharum. Sugar Maple. 1 to 2 ft.....	50	4 00	
2 to 3 ft.....	75	6 00	
3 to 4 ft.....	1 00	8 00	\$60 00
4 to 6 ft.....	1 50	12 00	
6 to 8 ft.....	2 00		
spicatum. Mountain Maple. 6 to 12 in.....	60	4 00	30 00
1 to 2 ft.....	1 00	8 00	60 00
2 to 3 ft.....	1 75		
Aesculus octandra. Yellow Buckeye. 1 to 2 ft....	50	4 00	
2 to 3 ft.....	1 00	8 00	
3 to 4 ft.....	1 50		
Amelanchier botryapium. Shadbush. 1 to 2 ft... 75	75	6 00	
2 to 3 ft.....	1 00	8 00	
3 to 4 ft.....	1 50	12 00	
4 to 6 ft.....	2 00	15 00	
Betula alba. 1 to 2 ft.....	75	6 00	
lutea. Yellow Birch. 1 to 2 ft.....	75	6 00	
2 to 4 ft.....	1 00	8 00	
4 to 6 ft.....	1 50	12 00	96 00
6 to 8 ft.....	2 50	20 00	160 00
lenta. Sweet Birch. 2 to 4 ft.....	1 00	8 00	
4 to 6 ft.....	1 75	14 00	
6 to 8 ft.....	2 00	16 00	
8 to 10 ft.....	3 50	28 00	
12 to 16 ft.....	6 00		
populifolia. Gray Birch. 1 to 2 ft.....	75	6 00	
2 to 3 ft.....	1 00		
Carpinus caroliniana. Water Beech. 1 to 2 ft....	60	5 00	40 00
2 to 3 ft.....	1 00	8 00	64 00
3 to 4 ft.....	1 50	12 00	95 00
4 to 6 ft.....	2 00	16 00	125 00
6 to 8 ft.....	2 75	20 00	
Castanea dentata. American Chestnut. 6 to 12 in.	75	4 00	
pumila. Chinkapin. 6 to 12 in.....	1 50	12 00	
12 to 18 in.....	2 25	18 00	
Catalpa speciosa. Bean Tree. 3 to 4 ft.....	50	4 00	
4 to 6 ft.....	1 00	8 00	
Cercis canadensis. Red Bud. 6 to 12 in.....	50	4 00	
1 to 2 ft.....	75		
3 to 4 ft.....	2 00		
Cladrastis lutea. Kentucky Yellow Wood.			
3 to 4 ft.....	2 00		
4 to 5 ft.....	3 00		
Cornus alternifolia. Swamp Dogwood. 1 to 2 ft..	50	4 00	
2 to 3 ft.....	75	6 00	
3 to 4 ft.....	1 25	10 00	
4 to 6 ft.....	2 00	16 00	
florida. Flowering Dogwood. 1 to 2 ft.....	1 00	8 00	
2 to 3 ft.....	2 00	15 00	
Diospyros virginiana. Persimmon. 6 to 12 in....	75	6 00	
1 to 2 ft.....	1 00	8 00	
Fraxinus americana. White Ash. 1 to 2 ft.....	75	6 00	
2 to 3 ft.....	1 00	8 00	
3 to 4 ft.....	1 25	10 00	
4 to 6 ft.....	1 50		
lanceolata. Green Ash. 1 to 2 ft. S.....	40	2 50	20 00
2 to 4 ft. S.....	60	4 00	35 00
2 to 3 ft.....	75	6 00	
3 to 4 ft.....	1 00	8 00	
4 to 6 ft.....	1 25	10 00	
oregona. 6 to 12 in.....	2 00		
Ilex monticola. Mountain Holly. 6 to 12 in.....	50	4 00	
1 to 2 ft.....	75	6 00	
2 to 3 ft.....	1 25	10 00	
3 to 4 ft.....	1 50		
4 to 6 ft.....	2 50	20 00	
6 to 8 ft.....	4 00		
Larix laricina. American Larch. 2 to 3 ft.....	1 25	10 00	
3 to 4 ft.....	2 00	15 00	
4 to 6 ft.....	3 00		

KELSEY'S Hardy American Plants

Rhododendrons and Azaleas

DECIDUOUS TREES, continued

	Per 10	100	1,000
Liquidambar styraciflua. Sweet Gum. 2 to 3 ft..	\$1 25	\$10 00	
3 to 4 ft.....	2 00	15 00	
4 to 6 ft.....	3 00		
Liriodendron tulipifera. Tulip Tree. 6 to 12 in..	40	3 00	
1 to 2 ft.....	60	4 50	
2 to 3 ft.....	1 00	8 00	
3 to 4 ft.....	1 25	10 00	
4 to 6 ft.....	1 50	12 00	
Magnolia acuminata. Cucumber Tree. 6 to 12 in..	40	3 00	
1 to 2 ft.....	60		
fraseri. Fraser's Magnolia, 6 to 12 in.....	1 00	8 00	
1 to 2 ft.....	1 50	12 00	
2 to 3 ft.....	2 50		
3 to 4 ft.....	3 00		
tripetala. 6 to 12 in.....	1 00	8 00	
4 to 6 ft.....	3 00		
Malus coronaria. Wild Crab Apple. 6 to 12 in.....	1 25	10 00	
1 to 2 ft.....	2 00	16 00	
2 to 3 ft.....	3 00	25 00	
3 to 4 ft.....	4 00	30 00	
Mohrodendron (Halesia) diptera. Snowdrop			
Tree. 6 to 12 in.....	75	6 00	
1 to 2 ft.....	1 25	10 00	
2 to 3 ft.....	2 00		
carolinum (<i>Halesia tetraptera</i>). 1 to 2 ft.....	1 25	10 00	
2 to 3 ft.....	1 75	14 00	
3 to 4 ft.....	2 50	20 00	
4 to 6 ft.....	4 00	30 00	
6 to 8 ft.....	5 00		
Nyssa multiflora. 6 to 12 in.....	2 00		
Ostrya virginica. 1 to 2 ft.....	1 00	8 00	
2 to 3 ft.....	1 25	10 00	
3 to 4 ft.....	1 75		
4 to 6 ft.....	2 50		
Oxydendrum arboreum. Tree Andromeda.			
6 to 12 in.....	75	6 00	\$50 00
1 to 2 ft.....	1 00	8 00	65 00
Prunus pennsylvanicum. 1 to 2 ft. col.....	4 00	2 00	8 00
Ptelia trifoliata. Hop-Tree. 2 to 4 ft.....	75	6 00	40 00
4 to 6 ft.....	1 25	12 00	
Quercus alba. White Oak. 6 to 12 in. S.....	50	3 00	
6 to 12 in.....	75	5 00	
12 to 18 in.....	1 25	10 00	
bannesteri. 6 to 12 in. S.....	2 00		
cerris. 1 to 2 ft.....	2 00		
coccinea. Scarlet Oak. 6 to 12 in. S.....	75	4 00	35 00
1 to 2 ft. S.....	1 00	5 00	45 00
2 to 4 ft. S.....	1 25	10 00	80 00
2 to 4 ft.....	1 75	14 00	120 00
4 to 6 ft.....	4 00	30 00	
6 to 8 ft.....	6 00	45 00	
laurifolia. Laurel Oak. 6 to 12 in. S.....	2 00		
macrocarpa. Bur Oak. 2 to 4 ft.....	2 50		
palustris. Pin Oak. 2 to 4 ft.....	2 00	15 00	
4 to 6 ft.....	3 50	28 00	
6 to 8 ft.....	4 50	35 00	
prinus. Chestnut Oak. 1 to 2 ft.....	2 00	15 00	
2 to 3 ft.....	3 00	24 00	
4 to 6 ft.....	4 00		
rubra. Red Oak. 6 to 12 in.....	1 00	8 00	
1 to 2 ft.....	1 50	12 00	
2 to 4 ft.....	2 00	15 00	
4 to 6 ft.....	4 00		
6 to 8 ft.....	5 00	40 00	
texana. 6 to 12 in. S.....	2 50		
Rhamnus caroliniana. Buckthorn. 1 to 2 ft.....	60		
2 to 3 ft.....	75		
3 to 4 ft.....	1 25		
Rhus cotinoides. Southern Smoke Tree. 1 to 2 ft..	6 00		
2 to 3 ft.....	10 00		
3 to 4 ft.....	15 00		
4 to 6 ft.....	20 00		
6 to 8 ft.....	30 00		
Robinia pseudacacia. Yellow Locust. 1 to 2 ft....	40	3 00	
2 to 3 ft.....	60	4 50	
3 to 4 ft.....	75		

KELSEY'S Hardy American Plants Rhododendrons and Azaleas

DECIDUOUS TREES, continued

	Per 10	100	1,000
Sassafras officinale. 6 to 12 in.....	\$1 25	\$10 00	
1 to 2 ft.....	2 00	15 00	
Sorbus americana. American Mountain Ash..			
1 to 2 ft.....	1 00	8 00	
2 to 4 ft.....	1 50	12 00	
4 to 6 ft.....	2 50	20 00	
Tilia heterophylla. White Basswood. 2 to 3 ft.....	1 50		
3 to 4 ft.....	2 50		
4 to 5 ft.....	3 50		

EVERGREEN TREES

	Per 10	100	1,000
Abies balsamea. Balsam Fir. 6 to 12 in.....	\$1 50		
1 to 2 ft.....	2 00		
2 to 3 ft.....	2 50		
concolor. White Fir. 6 to 12 in.....	2 00	\$12 00	
1 to 2 ft.....	4 00	30 00	
douglasii. See <i>Pseudotsuga taxifolia</i> .			
fraseri. Fraser's Southern Fir. 6 to 12 in.....	50	4 00	
12 to 18 in.....	75	6 00	
1½ to 2 ft.....	1 50	12 00	
2 to 2½ ft.....	2 50		
Ilex opaca. American Holly. 6 to 12 in.....	1 50	12 00	\$100 00
12 to 18 in.....	2 00	16 00	
18 to 24 in.....	3 50	30 00	
2 to 3 ft.....	6 00	50 00	
3 to 4 ft.....	9 00		
Juniperus virginiana. Red Cedar. 2 to 3 ft.....	2 50		
Magnolia glauca. Sweet Bay. 6 to 12 in.....	1 50		
12 to 18 in.....	2 00		
glauca thompsoniana. 6 to 12 in.....	1 50	12 00	
2 to 3 ft.....	2 00	18 00	
Picea canadensis. White Spruce. 6 to 12 in.....	1 00	8 00	
1 to 2 ft.....	1 50	12 00	
2 to 3 ft.....	2 50		
mariana. Black Spruce. 6 to 12 in.....	60	4 50	
1 to 2 ft.....	1 00	8 00	
2 to 3 ft.....	1 50	12 00	
3 to 4 ft.....	2 50	20 00	
4 to 6 ft.....	5 00		
pugens. Colorado Blue Spruce. 6 to 12 in.....	2 00	16 00	
12 to 18 in.....	5 00	45 00	
18 to 24 in.....	7 50		
Pinus banksiana. 2 to 3 ft.....	1 00	8 00	
3 to 4 ft.....	1 50	12 00	
4 to 6 ft.....	3 00	25 00	
6 to 8 ft.....	4 50	35 00	
flexilis. Limber Pine. 6 to 12 in.....	1 50		
1 to 2 ft.....	2 50		
mitis. 6 to 12 in.....	1 50	12 00	
12 to 18 in.....	2 50		
pungens. Table Mountain Pine. 6 to 12 in.....	1 00	8 00	60 00
1 to 2 ft.....	1 25	10 00	80 00
rigida. 6 to 12 in.....	1 00	8 00	
strobis. White Pine. 6 to 12 in.....	1 00	8 00	
1 to 2 ft.....	1 75	14 00	
2 to 3 ft.....	2 25	18 00	
3 to 4 ft.....	3 50	30 00	
4 to 6 ft.....	6 00	45 00	400 00
6 to 8 ft.....	10 00	90 00	
divaricata. 3 to 6 in. S.....	75	5 00	
taeda. 1 to 2 ft.....	2 00		
ponderosa. Western Yellow Pine. 1 yr. S.....	75	5 00	
6 to 12 in.....	2 00		
12 to 18 in.....	2 50		
Pseudotsuga taxifolia (Abies Douglasii). Douglas			
Fir. 6 to 12 in.....	1 00	8 00	60 00
12 to 18 in.....	2 00	15 00	
18 to 24 in.....	3 50		
Thuja occidentalis. American Arborvitæ. 6 to 12 in. 50	4 00		
1 to 2 ft.....	75	6 00	45 00
2 to 3 ft.....	1 50	12 00	100 00
3 to 4 ft.....	2 00	16 00	125 00
4 to 6 ft.....	4 00	35 00	

KELSEY'S Hardy American Plants Rhododendrons and Azaleas

EVERGREEN TREES. continued

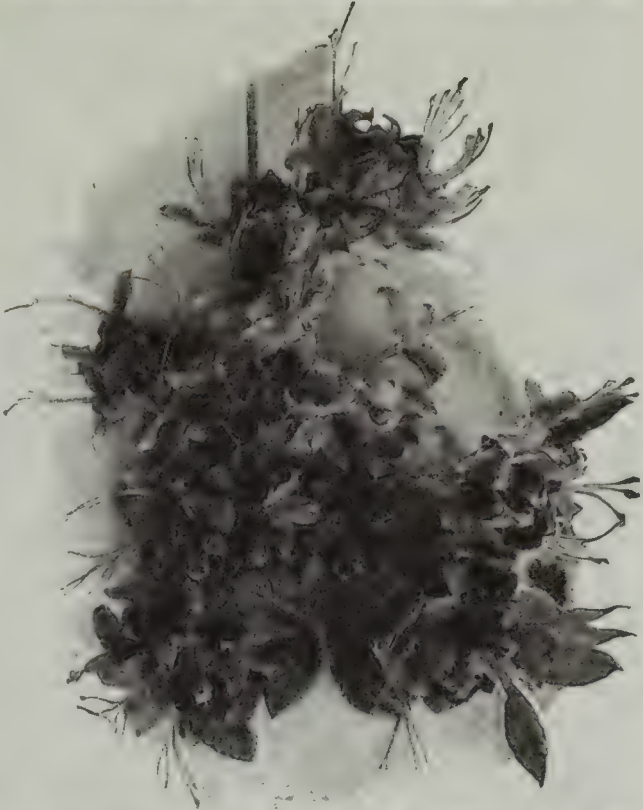
	Per 16	100	1,000
Tsuga canadensis. Common Hemlock. 6 to 12 in.....	\$0 50	\$4 00	\$35 00
12 to 18 in.....	1 00	8 00	65 00
18 to 24 in.....	1 75	16 00	125 00
2 to 3 ft.....	3 00	25 00	200 00
3 to 4 ft.....	6 00	45 00	360 00
4 to 6 ft.....	10 00	80 00	
caroliniana. Carolina Hemlock. 6 to 12 in.....	1 50	12 00	
12 to 18 in.....	2 50	20 00	
18 to 24 in.....	4 00	30 00	
2 to 3 ft.....	12 50	100 00	
3 to 4 ft.....	30 00	240 00	
4 to 5 ft.....	60 00	475 00	

DECIDUOUS SHRUBS

	Per 10	100	1,000
Adelia acuminata. 1 to 2 ft.....	\$2 00		
2 to 3 ft.....	3 00		
Alnus alnobetula. Alpine Alder. 1 to 2 ft.....	50	\$4 00	
2 to 3 ft.....	75	5 00	
3 to 4 ft.....	1 00	8 00	
4 to 6 ft.....	2 00	15 00	
6 to 8 ft.....	3 50	27 00	
Clumps, 2 to 3 ft.....	5 00		
rugosa. Smooth Alder. 2 to 3 ft.....	1 00	8 00	
3 to 4 ft.....	2 00	15 00	
4 to 6 ft.....	4 00	35 00	
Amorpha fruticosa. False Indigo. 6 to 12 in.....	40	2 50	
1 to 2 ft.....	60	4 00	
4 to 6 ft.....	75		
montana. 6 to 12 in.....	1 75		
1 to 2 ft.....	2 50		
Andromeda mariana. See Pieris.			
Aralia spinosa. Hercules' Club. 1 to 2 ft.....	75	5 00	
2 to 3 ft.....	1 00	7 00	
3 to 4 ft.....	1 50	12 00	
4 to 6 ft.....	2 00		
Aronia (Pyrus) arbutifolia. Red Chokeberry.			
6 to 12 in.....	75	6 00	
1 to 2 ft.....	1 00	8 00	
2 to 3 ft.....	1 50	12 00	
3 to 4 ft.....	2 00	16 00	
4 to 6 ft.....	4 00		
erythrocarpa (Dwarf). 6 to 18 in. S.....	75	5 00	
1 to 2 ft.....	1 00		
2 to 3 ft.....	1 50	12 00	
3 to 4 ft.....	2 00		
erythrocarpa (Tall). 1 to 2 ft.....	2 00		
2 to 2½ ft.....	3 00		
melanocarpa. 1½ to 2½ ft.....	3 00		
nigra. 1 to 2 ft.....	75	6 00	\$45 00
2 to 3 ft.....	1 25	10 00	80 00
3 to 4 ft.....	2 50	20 00	
4 to 5 ft.....	3 50		
Ascyrum hypericoides. St. Andrew's Cross. Good Ground Cover. Clumps.....	1 50	12 00	
Azalea arborecens. Fragrant Tree Azalea.			
Strong bushy plants. 6 to 12 in.....	1 50	12 00	
Strong bushy plants. 12 to 18 in.....	2 00	18 00	
Strong bushy plants. 18 to 24 in.....	3 00	25 00	
Clumps. 12 to 18 in.....	6 00	50 00	
Clumps. 18 to 24 in.....	12 00	100 00	
Clumps. 2 to 3 ft.....	25 00	200 00	
Clumps. 3 to 3½ ft.....	35 00		
lutea (calendulacea). Great Flame Azalea.			
6 to 12 in.....	1 00	8 00	70 00
Strong bushy plants. 12 to 18 in.....	1 75	15 00	125 00
Strong bushy plants. 18 to 24 in.....	2 50	20 00	175 00
Strong bushy plants. 2 to 3 ft.....	4 50	40 00	350 00
Strong bushy plants. 3 to 4 ft.....	7 50	60 00	
Clumps. 12 to 18 in.....	2 75	22 00	
Clumps. 18 to 24 in.....	4 00	35 00	300 00
Clumps. 2 to 3 ft.....	8 00	65 00	500 00
Clumps. 3 to 4 ft.....	17 50	140 00	
nudiflora. Pinxter Flower. 6 to 12 in.....	1 00	8 00	65 00
12 to 18 in.....	1 50	12 00	95 00
18 to 24 in.....	2 50	20 00	
2 to 3 ft.....	4 00	32 00	

KELSEY'S Hardy American Plants

Rhododendrons and Azaleas



Azalea calendulacea (lutea). Flame-colored Azalea. Photographed at our Salem Branch Nursery. Varies from light sulphur-yellow to crimson. (See page 10)

DECIDUOUS SHRUBS, continued

	Per 10	100	1,000
Azalea vaseyi . Southern Azalea. 6 to 12 in.....	\$1 50	\$12 00	\$100 00
12 to 18 in.....	2 25	20 00	160 00
18 to 24 in.....	4 50	35 00	
2 to 2½ ft.....	8 00		
<i>viscosa</i> . Small White Azalea. 6 to 12 in.....	1 00	8 00	60 00
12 to 18 in.....	1 25	10 00	80 00
18 to 24 in.....	2 50		
Baccharis halimifolia . Groundsel. 1 to 2 ft.....	1 00		
2 to 3 ft.....	1 50		
Benzoin (Lindera) benzoin . Spice Bush.			
1 to 2 ft.....	1 00	7 00	
2 to 3 ft.....	1 25	10 00	
3 to 4 ft.....	1 75	15 00	
Berberis aquifolium (repens) . 3 to 6 in.....	2 50	20 00	
<i>canadensis</i> . American Barberry. 6 to 12 in.....	50	3 00	20 00
1 to 2 ft.....	75	5 00	
<i>thunbergii</i> . Japanese Barberry. 1 to 2 ft.....	1 00	7 00	
Clumps. 2 to 3 ft.....	2 00	15 00	
Clumps. 3 to 4 ft.....	3 50		
<i>vulgaris</i> . Common Barberry. 6 to 12 in.....	50	4 00	
1 to 2 ft.....	75		
2 to 3 ft.....	1 25		
Calycanthus (Butneria) fertilis . Smooth Sweet			
Shrub. 1 to 2 ft.....	75	5 00	
Clumps. 2 to 3 ft.....	1 25	10 00	
Clumps. 3 to 4 ft.....	2 00		

KELSEY'S Hardy American Plants Rhododendrons and Azaleas

DECIDUOUS SHRUBS, continued

	Per 10	100	1,000
Calycanthus (Butneria) floridus. Sweet Shrub.			
6 to 12 in.	\$0 50	\$3 00	
1 to 2 ft.	75	5 00	\$35 00
2 to 3 ft.	1 25	10 00	75 00
3 to 4 ft.	2 00	15 00	
Ceanothus americanus. New Jersey Tea.			
6 to 12 in.	75	5 00	
1 to 2 ft.	1 25	10 00	
2 to 3 ft.	2 00	15 00	
Cephalanthus occidentalis. Button Bush.			
1 to 2 ft.	1 00	8 00	
2 to 3 ft.	1 75	12 00	
Chionanthus virginica. White Fringe. 6 to 12 in.	50	4 00	30 00
1 to 2 ft.	1 00	8 00	
2 to 3 ft.	1 75	12 00	
3 to 4 ft.	2 50	20 00	
4 to 5 ft.	6 00	40 00	
Clethra acuminata. Southern Pepper Bush.			
1 to 2 ft.	75	5 00	
2 to 3 ft.	1 25	8 00	
3 to 4 ft.	1 75	12 00	
4 to 6 ft.	2 50	20 00	
6 to 8 ft.	3 50		
alnifolia. Pepper Bush. Clumps, 1 to 2 ft.	1 50	12 00	100 00
Clumps, 2 to 3 ft.	2 50	20 00	
Clumps, 3 to 4 ft.	6 00		
Comptonia peregrina (asprenifolia). 6 to 12 in.	50	4 00	
1 to 2 ft.	75	6 00	
Cornus alba. Scarlet-twigged Cornel. 1 to 2 ft.	75	5 00	
2 to 3 ft.	1 00	8 00	
Clumps, 3 to 4 ft.	1 75	12 00	
paniculata. Panicled Cornel. 1 to 2 ft.	1 00	8 00	
2 to 3 ft.	1 50	12 00	
3 to 4 ft.	2 00		
amomum. Silky Cornel. 1 to 2 ft.	75	4 00	
2 to 3 ft.	1 00	6 00	
3 to 4 ft.	1 50	12 00	
4 to 6 ft.	2 00	15 00	
florida rubra.	20 00		
sericea. 6 to 12 in.	1 00	8 00	
1 to 2 ft.	1 50		
stolonifera. Red-twigged Dogwood. 1 to 2 ft.	75		
stolonifera aurea. Yellow-twigged Dogwood			
1 to 2 ft.	1 50		
Corylus americana. Hazel Nut. 1 to 2 ft.	75	6 00	
2 to 3 ft.	1 25	10 00	
3 to 4 ft.	1 75		
rostrata. 1 to 2 ft.	75	6 00	50 00
2 to 3 ft.	1 25	10 00	
3 to 4 ft.	2 00		
Crataegus coccinea. White Thorn. 6 to 12 in.	75	5 00	
1 to 2 ft.	1 00	8 00	
2 to 3 ft.	1 25		
crus-galli. Coekspur Thorn. 6 to 12 in.	75	4 00	
1 to 2 ft.	1 00	7 00	
2 to 3 ft.	1 50	12 00	
punctata. Large-fruited Thorn. 6 to 12 in.	75	5 00	
1 to 2 ft.	1 25	10 00	75 00
2 to 3 ft.	1 50	12 00	
3 to 4 ft.	2 50		
rivularis. 6 to 12 in.	2 50		
Decodon (Nesaea) verticillatus.			
Light.	75	5 00	
Strong.	1 25	10 00	
Diervilla diervilla (trifida). Bush Honeysuckle.			
6 to 12 in.	1 00	7 00	
12 to 18 in.	1 25	10 00	
rivularis. Western Bush Honeysuckle. 2 to 3 ft.	2 00		
sessilifolia. Southern Bush Honeysuckle.			
6 to 12 in.	75	5 00	
1 to 2 ft.	1 00	8 00	
Euonymus americanus. Strawberry Bush.			
6 to 12 in.	75	6 00	
1 to 2 ft.	1 00	8 00	
2 to 3 ft.	1 50	12 00	
3 to 4 ft.	2 50	20 00	
4 to 5 ft.	3 50		

KELSEY'S Hardy American Plants

Rhododendrons and Azaleas

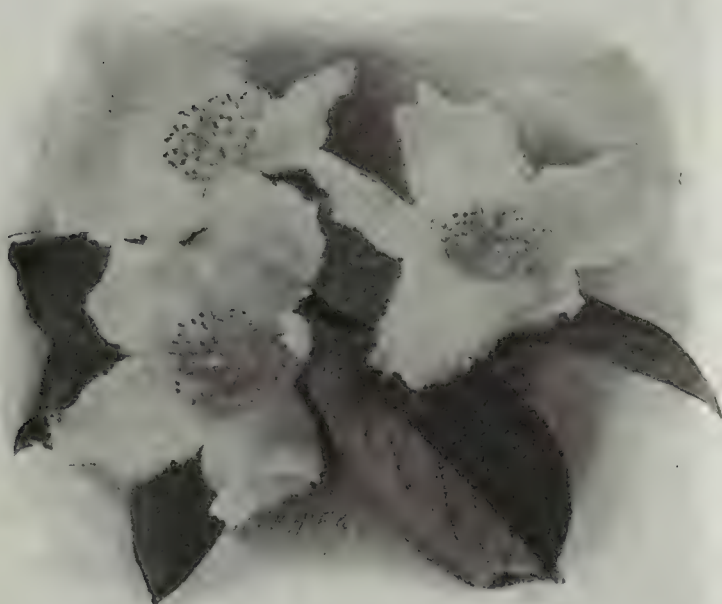
DECIDUOUS SHRUBS, continued

	Per 10	100	1,000
Gaylussacia resinosa. Black Huckleberry.			
6 to 12 in.....	\$0 75	\$6 00	
12 to 18 in.....	1 25		
Ursina. Buckberry. 6 to 12 in.....	1 50		
1 to 2 ft.....	2 50		
Hamamelis virginica. Witch Hazel. 6 to 12 in...	75	6 00	
1 to 2 ft.....	1 00	8 00	
2 to 3 ft.....	1 50	12 00	
3 to 4 ft.....	2 25	17 50	
4 to 6 ft.....	3 00	25 00	
6 to 8 ft.....	4 50		
Hydrangea arborescens. Smooth Hydrangea.			
6 to 12 in.....	1 00		
Clumps, 1 to 2 ft.....	1 50	12 00	
Clumps, 2 to 3 ft.....	2 00	15 00	
radiata. Silver Hydrangea. 6 to 12 in.....	1 00		
1 to 2 ft.....	1 50	12 00	
Ilex decidua. Meadow Holly. 6 to 12 in.....	75	5 00	
1 to 2 ft.....	1 25	10 00	
verticillata. Virginia Winter Berry. 1 to 2 ft....	1 00	8 00	
2 to 3 ft.....	1 75	15 00	
3 to 4 ft.....	2 50	20 00	
Clumps, 2 to 3 ft.....	3 00	25 00	
Itea virginica. 6 to 12 in.....	75	6 00	
Clumps, 1 to 2 ft.....	1 50	12 00	
Jamesia americana. 6 to 12 in.....	3 00		
Leucothoe recurva. 6 to 12 in.....	75	6 00	
1 to 2 ft.....	1 00	8 00	
Ligustrum ibota. 1 to 2 ft. S.		2 00	\$15 00
6 to 12 in.....	40	3 00	20 00
1 to 2 ft.....	60	4 00	30 00
2 to 3 ft.....	1 00	7 00	
regellanum. 6 to 12 in.....	40	3 00	
1 to 2 ft.....	75	5 00	40 00
2 to 3 ft.....	1 25	9 00	
Lindera. See Benzoin,			
Menziesia pilosa. Alleghany Menziesia. 6 to 12 in.	1 00	9 00	
1 to 2 ft.....	1 50	12 00	
Myrica cerifera. 6 to 12 in.....	75	6 00	50 00
12 to 18 in.....	1 50	12 00	
18 to 24 in.....	2 00	15 00	
Pieris (Andromeda) mariana. 6 to 12 in.....	1 00	8 00	
Clumps, 1 to 2 ft.....	2 00	16 00	
Clumps, 2 to 2½ ft.....	3 00		
Prunus besseyi. 6 to 12 in.....	1 00		
3 to 4 ft.....	3 50		
maritima. Beach Plum. 1 to 2 ft.....	75	6 00	
2 to 3 ft.....	1 25	10 00	
3 to 4 ft.....	2 00		
pumila. Sand Cherry. 6 to 12 in.....	75	6 00	
1 to 2 ft.....	1 50	12 00	
2 to 3 ft.....	2 00		
Rhodora canadensis. 6 to 12 in.....	2 00	16 00	
Rhodotypus kerrioides. 6 to 12 in.....	75	5 00	
1 to 2 ft.....	1 00	8 00	
Rhus aromatica. Fragrant Sumac. 6 to 12 in.....	1 50	12 00	
1 to 2 ft.....	2 00		
copallina. Scarlet Sumac. 6 to 12 in.....	75	5 00	
1 to 2 ft.....	1 25	10 00	
2 to 3 ft.....	1 75		
hirta (typhina). Staghorn Sumac. 1 to 2 ft....	75	5 00	
2 to 3 ft.....	1 00	7 00	
3 to 4 ft.....	1 50		
Ribes cynosbati. Wild Gooseberry. 6 to 12 in.....	1 00		
1 to 2 ft.....	1 50	12 00	
2 to 3 ft.....	2 00		
prostratum. 1 to 2 ft.....	1 50	12 00	
rotundifolium. Eastern Gooseberry. 2 to 4 ft....	1 50		
Robinia hispida. Moss Locust. 6 to 12 in.....	75	5 00	
1 to 2 ft.....	1 00	7 00	
2 to 3 ft.....	1 25	10 00	
kelseyi. Alleghany Moss Locust. 6 to 12 in.....	1 50		
1 to 2 ft.....	2 50		
2 to 3 ft.....	3 50		
rosea. 6 to 12 in.....	1 00		

KELSEY'S Hardy American Plants Rhododendrons and Azaleas

DECIDUOUS SHRUBS, continued

	Per 10	100	1,000
Robinia viscosa. Pink-Flowering Locust.			
1 to 2 ft.....	\$1 00		
2 to 3 ft.....	1 25		
Rosa arkansana. Arkansas Rose. 6 to 12 in.....	1 50		
1 to 2 ft.....	2 50		
blanda. 6 to 12 in.....	1 00	\$7 00	
1 to 2 ft.....	1 25	10 00	
carolina. Strong Stocky Swamp Rose.			
6 to 12 in.....	75	4 00	\$30 00
1 to 2 ft.....	1 00	6 00	50 00
2 to 3 ft.....	1 25	10 00	
humilis lucida. Pasture Rose. 6 to 12 in.....	75	5 00	
1 to 2 ft.....	1 25	10 00	
lucida. 1 to 2 ft.....	1 25	9 00	
2 to 3 ft.....	2 00		
nitida. 6 to 12 in.....	1 00	8 00	
12 to 18 in.....	1 50		
nutkana. Wasatch Rose. 6 to 12 in. S.....	2 00		
1 to 2 ft.....	3 50		
rugosa. 6 to 12 in.....	75	5 00	
1 to 2 ft.....	1 00		
2 to 3 ft.....	1 50	10 00	
rugosa alba. Clumps. 2 to 3 ft.....	1 50	12 00	
setigera. Prairie Rose. 6 to 12 in.....	50	4 00	
1 to 2 ft.....	1 00	8 00	
woodsil. 6 to 12 in.....	2 50		
Rubus deliciosus. 6 to 12 in.....	2 00		
laciniatus. 1 to 2 ft.....	2 00		
2 to 3 ft.....	3 00		
odoratus. Flowering Raspberry. 6 to 12 in.....	60	4 50	
1 to 2 ft.....	75	6 00	
spectabilis. 8 to 12 in.....	1 50		
2 to 3 ft.....	2 50		



The creamy white flowers of *Stuartia pentagyna*, the rare 'American Camellia.'
(See page 15)

KELSEY'S Hardy American Plants

Rhododendrons and Azaleas

DECIDUOUS SHRUBS, continued

Sambucus canadensis. Common Elder.	Per 10	100	1.000
1 to ft. col.	\$0 40	\$3 00	\$18 00
2 to 3 ft.	1 00	7 00	
pubens. Red-Berried Elder. 1 to 2 ft.	1 00	8 00	
2 to 3 ft.	1 50	12 00	
Spiraea salicifolia. Meadow Sweet.			
Clumps, 2 to 3 ft.	60	4 00	
Clumps, 3 to 4 ft.	75	6 00	
Clumps, 4 to 6 ft.	1 00	8 00	
tomentosa. Steeple Bush, 6 to 12 in.	75	6 00	
12 to 18 in.	1 25	10 00	
tomentosa alba. 3 to 6 in.	75	5 00	
1 to 2 ft.	1 50		
Stuartia pentagyna. Southern Stuartia.			
6 to 12 in.	75	6 00	50 00
1 to 2 ft.	1 75	15 00	130 00
2 to 3 ft.	3 50	30 00	
3 to 4 ft.	5 00	45 00	
4 to 5 ft.	9 00	70 00	
Symphoricarpos racemosus. Snowberry.			
6 to 12 in.	50	4 00	
1 to 2 ft.	75	6 00	
Clumps, 2 to 3 ft.	1 25	10 00	
symphoricarpos (vulgaris). 1 to 2 ft.	75		
2 to 3 ft.	1 25	9 00	
Vaccinium erythrocarpon. 6 to 12 in.	1 25	10 00	
12 to 18 in.	2 00	16 00	
hirsutum. 6 to 12 in.	2 50	20 00	
12 to 18 in.	3 50		
pallidum. Mountain Blueberry, 6 to 12 in.	1 00	8 00	
1 to 2 ft.	1 50	12 00	
pennsylvanicum. Dwarf Blueberry, 3 to 6 in.	1 25		
stamineum. Deerberrry, 6 to 12 in.	1 00	8 00	
12 to 18 in.	1 25	10 00	
18 to 24 in.	1 75	14 00	
Clumps, 12 to 18 in.	2 00	18 00	
Clumps, 18 to 24 in.	2 75	22 00	
Viburnum acerifolium. Maple-leaved Arrowwood.			
1 to 2 ft.	1 00	8 00	65 00
2 to 3 ft.	1 50	12 00	
Clumps, 1 to 2 ft.	1 75	14 00	
Clumps, 2 to 3 ft.	2 00	18 00	
alnifolium (lantanoides). Hobble Bush.			
6 to 12 in.	1 00	8 00	
1 to 2 ft.	1 75	16 00	
2 to 3 ft.	3 00	25 00	
cassinoides. Shawnee Haw, 6 to 12 in. S.	60	4 50	35 00
1 to 2 ft. S.	75	6 00	45 00
2 to 3 ft. S.	1 50	12 00	95 00
6 to 12 in.	75	5 00	
1 to 2 ft.	1 50	12 00	95 00
2 to 3 ft.	2 00	16 00	
3 to 4 ft.	2 25	18 00	
Clumps, 2 to 3 ft.	2 50	20 00	
Clumps, 3 to 4 ft.	4 00	30 00	
Clumps, 4 to 6 ft.	6 00	45 00	
dentatum. Arrowwood, 6 to 12 in. S.	60	4 50	
1 to 2 ft. S.	75	5 00	
1 to 2 ft.	1 00	8 00	
2 to 3 ft.	1 75	12 00	
Clumps, 4 to 6 ft.	5 00		
dentatum molle.	7 50		
nudum. Withe Rod, 1 to 2 ft.	1 00	8 00	
2 to 3 ft.	2 00	15 00	
3 to 4 ft.	3 00	25 00	
oxycoccus. 1 to 2 ft.	1 50	12 00	
2 to 3 ft.	2 00	16 00	
3 to 4 ft.	3 00	25 00	
prunifolium. 6 to 12 in.	1 50	12 00	
1 to 2 ft.	2 00	16 00	
2 to 3 ft.	3 00		
Xanthorrhiza apiifolia. Yellow Root.			
Clumps, 3 to 6 in.	75	6 00	45 00
Clumps, 6 to 12 in.	1 00	8 00	60 00
12 to 18 in.	1 50	12 00	
Xolisma ligustrina. Privet Andromeda, 6 to 12 in.	75	5 00	
1 to 2 ft.	1 00	8 00	
Clumps, 1 to 2 ft.	1 50		

KELSEY'S Hardy American Plants Rhododendrons and Azaleas

EVERGREEN SHRUBS

	Per 10	100	1,000
Andromeda <i>pollifolia</i> . Wild Rosemary.			
3 to 6 in.....	\$1 00	\$8 00	
6 to 12 in.....	1 50	12 00	
Chamaedaphne (Andromeda) <i>calyculata</i> .			
Leather Leaf. 6 to 12 in.....	1 00	8 00	
12 to 18 in.....	1 50	12 00	
Clumps, 18 to 24 in.....	2 50	20 00	
Dendrium (Leiophyllum) <i>buxifolium</i> . Sand			
Myrtle. 6 to 12 in.....	1 00	7 00	
Clumps, 12 to 18 in.....	1 75	12 00	
prostratum. Mountain Heath. Clumps, 3 to 6 in.	1 25	10 00	
6 to 9 in.....	1 75	15 00	
Hypericum <i>aureum</i> . Golden St. John's Wort.			
1 to 2 ft.....	1 00	8 00	
2 to 3 ft.....	1 50	12 00	
<i>densiflorum</i> . Bushy St. John's Wort.			
1 to 2 ft. S.....	50	2 00	\$15 00
6 to 12 in.....	50	4 00	
1 to 2 ft.....	75	5 00	35 00
2 to 3 ft.....	1 00	8 00	
3 to 4 ft.....	1 50	12 00	
<i>prolificum</i> . Shrubby St. John's Wort. 1 to 2 ft.	1 00	8 00	
2 to 3 ft.....	1 50	12 00	
Ledum <i>groenlandicum</i> . Labrador Tea. 6 to 12 in..	1 00	8 00	
12 to 18 in.....	1 50	12 00	
Taxus <i>minor</i> . American Yew. 6 to 12 in.....	2 00	16 00	
Kalmia <i>angustifolia</i> . Dwarf Laurel. 6 to 12 in....	75	5 00	
12 to 18 in.....	1 25	10 00	

VINES AND CLIMBERS

	Per 10	100	1,000
Ampelopsis . See <i>Parthenocissus</i> .			
Aristolochia <i>sipho</i> . 6 to 12 in.....	\$0 75	\$6 00	\$50 00
1 to 2 ft.....	1 25	10 00	
Bignonia <i>crucigera</i> . Cross Vine. 6 to 12 in.....	75	5 00	40 00
Cebatha <i>carolina</i> . Carolina Moonseed. 6 to 12 in..	1 00	7 00	
Celastrus <i>punctata</i> . 3 to 6 in. S.....	50	4 00	20 00
6 to 12 in. S.....	75	5 00	
1 to 2 ft. S.....	1 00	8 00	
<i>scandens</i> . 6 to 12 in.....	50	4 00	
1 to 2 ft.....	75	6 00	50 00
2 to 3 ft.....	1 00	8 00	
Clematis <i>coccinea</i> . Scarlet Clematis. Med. Stg. .	2 50	20 00	
<i>crispa</i>	2 00	15 00	
<i>paniculata</i> . Stg. Tr.....	1 75		
<i>virginiana</i> . Stg. S.....	25	2 00	15 00
Stg. Tr.....	75	5 00	
Dioscorea <i>villosa</i> . Wild Yam. Stg.....	75	5 00	
Euonymus <i>radicans</i> . 4 to 12 in.....	1 50	12 00	
Humulus <i>lupulus</i> . Hop Vine.....	75	6 00	
Ipomoea <i>pandurata</i> . Moonflower.....	1 25		
Lonicera <i>dioica</i> . Smooth-leaved Honeysuckle.			
2 to 4 ft.....	1 25	8 00	
<i>flava</i> . Yellow Honeysuckle. Strong.....	1 00	8 00	
<i>japonica</i> , var. <i>halliana</i> . Hall's Honeysuckle.			
Strong.....	50	3 00	20 00
Strong clumps.....	75	5 00	40 00
<i>sempervirens</i> . Coral Honeysuckle. 1 to 2 ft.	1 50	12 00	
Menispermum <i>canadense</i> . Canada Moonseed....	50	4 00	
Parthenocissus (Ampelopsis) <i>engelmanni</i> .			
3d size.....	60	3 00	25 00
2d size.....	75	5 00	40 00
1st size.....	1 25	10 00	
collected plants. Strong.....			12 00
<i>virginica</i> (quinquefolia). 1st size... ..	75	5 00	
<i>vitacea</i> . 6 to 12 in. Stg.....	1 25	10 00	
Polygonum <i>ellinode</i> . Fringed Black Bindweed... ..	50	4 00	25 00
Tecoma <i>grandiflora</i> . Great Trumpet Vine. Stg... ..	2 50		
<i>radicans</i> . Scarlet Trumpet Creeper. 6 to 12 in..	40	3 00	

KELSEY'S Hardy American Plants

Rhododendrons and Azaleas

VINES AND CLIMBERS, continued

	Per 10	100	1,000
<i>Vitis aestivalis</i> . Summer Grape. 6 to 12 in.....	\$1 00	\$7 00	
1 to 2 ft.....	1 50	12 00	
<i>riparialis</i> . 6 to 12 in. S.....	1 00		
<i>cordifolia</i> . Frost Grape. 6 to 12 in.....	1 00	7 00	
1 to 2 ft.....	1 50	12 00	
<i>heterophylla</i> . 1 to 2 ft.....	1 75	15 00	
<i>labrusca</i> . Fox Grape. 6 to 12 in.....	75	4 00	
1 to 2 ft.....	1 00	8 00	
<i>monticola</i> . 2 to 3 ft.....	2 00		
<i>vulpina</i> . 6 to 12 in.....	1 50		
<i>Wistaria frutescens</i> . Lilac-purple. 1 to 2 ft.....	1 00		

GROUND-COVERING PLANTS

	Per 10	100	1,000
<i>Epigaea repens</i> . Trailing Arbutus.			
Small Clumps.....	\$2 00	\$15 00	
Col. Cl.....	1 00	7 00	
<i>Galax aphylla</i> . Galax or Coltsfoot. Tr. Cls.....	1 00	8 00	\$50 00
Col. Cl.....	75	5 00	30 00
<i>Gaultheria procumbens</i> . Col. Cl.....	75	5 00	30 00
<i>Glechoma hederacea</i> . Col.....	75	4 00	20 00
<i>Houstonia serpyllifolia</i> . Col. Cl.....	50	4 00	20 00
<i>Lycopodium</i> 3 var. Shining Club Moss. Col.....	50	4 00	
<i>Mitchella repens</i> . Col.....	75	5 00	35 00
Clumps.....	1 25	10 00	
<i>Oxycoccus (Vaccinium) macrocarpus</i>	75	6 00	40 00
<i>Phlox reptans</i> . Trailing Phlox. Col.....	50	4 00	
<i>subulata</i> . Moss Pink. Clumps.....	75		
<i>subulata alba</i> . White Moss Pink. Clumps.....	1 25	10 00	
<i>Potentilla tridentata</i> . Clumps.....	1 00	6 00	45 00
<i>Rubus canadensis</i> . Dewberry. 6 to 12 in.....	50	4 00	
1 to 2 ft.....	75	5 00	
<i>hispidus</i>	60	4 00	
<i>Veronica officinalis</i> and <i>serpyllifolia</i> . Col.....	60	4 00	
<i>Vinca minor</i> . Strong.....	75	5 00	40 00

NATIVE FERNS

	Per 10	100	1,000
<i>Adiantum pedatum</i> . Maidenhair Fern. Strong....	\$1 00	\$6 00	
Clumps.....	1 50	10 00	
<i>Asplenium filix-foemina</i> . Strong.....	75	5 00	
<i>thelypteroides</i> . Silvery Spleenwort.....	1 00	8 00	
<i>Athyrium thelypteroides</i>	1 00	6 00	
<i>Botrychium virginicum</i> . Virginia Grape Fern.			
Strong.....	75	5 00	
<i>Camptosorus rhizophyllus</i>	1 00	7 00	
<i>Chellanthus fendleri</i>	2 50		
<i>Cystopteris fragilis</i> . Brittle Fern.....	1 00	7 00	
<i>Dicksonia punctilobula</i> . Hay-Scented Fern.			
Clumps.....	75	5 00	
<i>Dryopteris acrostichoides</i>	75	5 00	\$35 00
<i>cristata clintoniana</i> . Clinton's Shield Fern.....	1 25		
<i>marginalis</i> . Shield Fern.....	75	5 00	35 00
<i>novaboracensis</i> . New York Fern.....	1 00	8 00	
<i>spinulosa</i> . Spinulosa Shield Fern. Col.....	1 00	6 00	40 00
<i>thelypteris</i> . Marsh Shield Fern.....	1 00	8 00	
<i>Onoclea sensibilis</i> . Sensitive Fern.....	75	5 00	
<i>Osmunda cinnamomea</i> . Cinnamon Fern.			
Heavy clumps.....	1 00	7 00	
<i>claytoniana</i> . Clayton's Fern. Heavy clumps....	1 00	7 00	
<i>regalis</i> . Royal Fern. Strong.....	1 00	7 00	
<i>Phegopteris hexagonoptera</i>	1 00	6 00	
<i>Polypodium vulgare</i> . Col. clumps.....	60	4 00	25 00
<i>Pteris aquilina</i> . Eagle Fern.....	50	4 00	

KELSEY'S Hardy American Plants Rhododendrons and Azaleas

AQUATIC AND BOG PLANTS

	Per 10	100	1,000
Acorus calamus. Sweet Flag.....	\$0 75	\$5 00	
Calla palustris. Water Calla.....	1 50	12 00	
Caltha palustris. Marsh Marigold.....	75	6 00	
Chelone glabra. White Turtle-head. Clumps.....	75	5 00	
lyoni. Clumps.....	75	5 00	
Chrysamphora (Darlington) californica. Cali- fornia Pitcher Plant.....	4 00		
Cicuta maculata. Water Hemlock.....	75	5 00	
Dionaea muscipula. Venus Fly-trap.....	1 00	6 00	
Helonias bullata. Swamp Pink. Strong Clumps..	75	6 00	
Iris pseudacorus. Yellow Flag. Strong.....	75	5 00	
Clumps.....	1 00		
versicolor. Large Blue Flag. Strong S.....	50	3 50	
Clumps.....	75	5 00	
Nuphar advena	1 50		
Orontium aquaticum. Golden Club.....	1 25		
Peltandra virginica	1 50		
Sagittaria latifolia. Broad-leaved Arrow-head....	50	3 00	
Sarracenia catesbaei	1 75	12 50	
drummondii. Drummond's Pitcher Plant.....	1 75	12 50	
flava. Trumpet-leaf. Strong.....	1 50	10 00	
minor. Spotted Trumpet Leaf.....	1 75	12 50	
psittacina. Parrot-beaked Pitcher Plant.....	1 75	12 50	
purpurea.....	1 00	8 00	
rubra. Red Trumpet-leaf.....	1 75	12 50	
Sparganium ramosum. Bur Reed.....	50	2 00	\$10 00
Typha latifolia. Broad-leaved Cat-tail.....	1 50	10 00	



Cyrtopodium regina (spectabile). Clumps under *Rhododendron maximum*.
Photographed at Highlands Nursery. (See page 19)



Cypripedium reginae (spectabile). Photographed at Highlands Nursery. We have over 25,000 crowns ready for this season's shipment

ORCHIDS

	Per 10	100	1,000
Arethusa bulbosa	\$1 25	\$10 00	
Cypripedium acule. Moccasin Flower. Light...	50	3 00	\$20 00
Strong.....	1 00	7 00	50 00
californicum.....	2 50	20 00	
hirsutum. Light.....	50	3 00	20 00
Strong.....	1 00	7 00	50 00
reginae -(spectabile). This species will be shipped from Salem Branch Nursery.			
1 to 2 crowns.....	2 00	15 00	
3 to 4 crowns.....	4 00	35 00	
5 to 6 crowns.....	6 00	55 00	
7 to 8 crowns.....	9 00	75 00	
Clumps with over eight crowns 15 cts. per crown.			

KELSEY'S Hardy American Plants Rhododendrons and Azaleas

ORCHIDS, continued

	Per 10	100	1,000
Habenaria ciliaris, Yellow-fringed Orchis.....	\$0 75	\$6 00	
hookeriana, Strong.....	1 25	10 00	
Limodorum tuberosum, Grass-pink, Light.....	75	5 00	
Strong.....	1 00	8 00	
Orchis spectabilis, Showy Orchis.....	1 50	12 00	
Peranium pubescens.....	1 50	12 50	

LILIES AND BULBOUS PLANTS

	Per 10	100	1,000
Allium cernuum, Nodding Wild Onion.....	\$1 00	\$7 00	
Arisaema triphyllum, Jack-in-the-Pulpit, S.....	60	4 50	
Stg.....	1 00	7 00	
Bicuculla canadensis.....	75	5 00	
cucullaria.....	75	5 00	
eximea, Stg.....	75	5 00	
Clumps.....	1 50	10 00	
Chrosperma muscaetoxicum.....	75	5 00	
Convallaria majalis, Lily-of-the-Valley.....	60	4 00	
Erythronium americanum, Col.....	50	3 00	\$12 50
Lilium carolinianum, 3d size.....	50	3 50	25 00
2d size.....	75	5 00	40 00
1st size.....	1 50	8 00	65 00
catesbaei.....	1 50		
grayi, 3d size.....	\$0 50	\$4 00	
2d size.....	1 00	6 00	45 00
1st size.....	1 50	9 00	70 00
pardalinum, 3d size.....	1 75	12 00	
1st size.....	2 50	20 00	
parviflorum, Strong.....	2 50		
parvum.....	2 50		
superbum, Turk's Cap Lily, 3d size.....	25	1 50	10 00
2d size.....	50	3 00	25 00
1st size.....	75	5 00	40 00
washingtonianum, 1st size.....	2 50		
washingtonianum purpureum, 1st size.....	2 50		
Trillium erectum, Erect Wake Robin, Light.....	25	2 00	12 50
Strong.....	40	3 00	20 00
erectum album, Light.....	60	4 50	30 00
Strong.....	1 00	7 00	
grandiflorum, Light.....	20	1 00	8 00
Strong.....	40	2 50	15 00
sessile californicum.....	1 50	10 00	
sessile rubrum.....	2 00		
stylosum, Light.....	60	2 50	
Strong.....	1 00	5 00	30 00
undulatum.....	75	4 00	

HERBACEOUS PERENNIALS

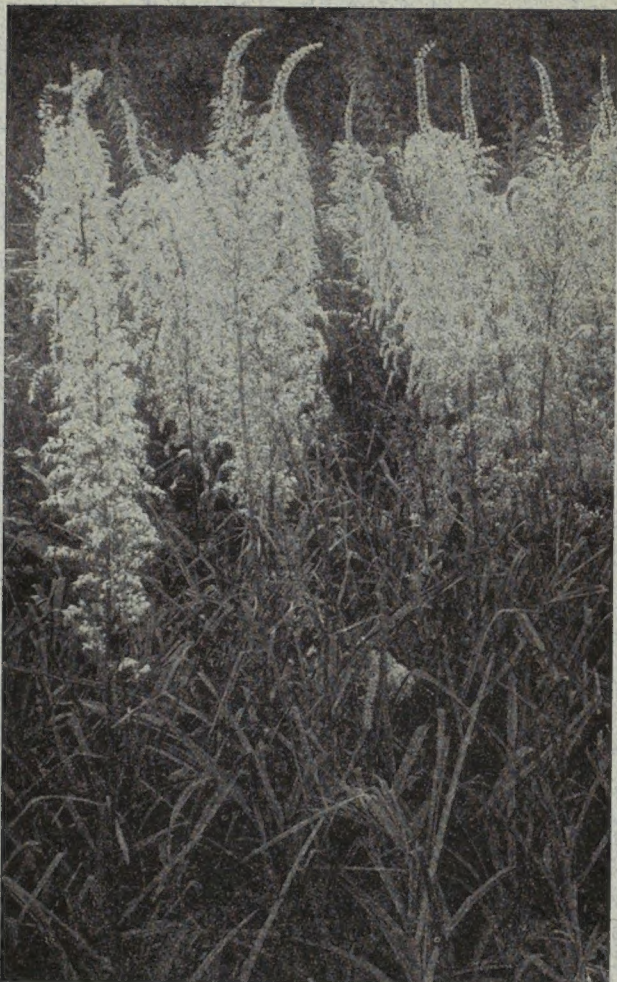
	Per 10	100	1,000
Aconitum reclinatum.....	\$1 25		
uncinatum, Wild Monk's Hood.....	75	\$5 00	
Actaea alba, White Baneberry.....	1 50	12 00	
Amsonia amsonia, Strong S.....	50	3 00	
Strong Tr.....	75	5 00	
Clumps.....	1 00	7 00	
Angelica curtisii, Angelica.....	60	4 00	
Aquilegia canadense.....	1 00	7 00	
Aralia nudicaulis.....	60	4 00	
racemosa, American Spikenard, Strong.....	75	5 00	
Strong Cl.....	1 00	8 00	
Archangelica hirsuta.....	60		
Aruncus (Spiraea) aruncus, Strong.....	1 00	7 00	
Asarum macranthum.....	2 00		
Asclepias incarnata, Swamp Milkweed, Strong S.....	75		
tuberosa, Butterfly Wood.....	1 00	8 00	
Aster , following varieties: acuminata, cordifolius, curtisii, divaricata, eriocoides pilosa, macro- phylla, prenanthoides, puniceus, umbellatus, undulatus.....	75	4 00	
Astilbe decandra.....	1 00	5 00	

KELSEY'S Hardy American Plants

Rhododendrons and Azaleas

HERBACEOUS PERENNIALS, continued

	Per 10	100	1,000
Baptisia australis. Wild Blue Indigo. Clumps.....	\$1 50	\$10 00	
<i>tinctoria.</i> Strong.....	1 00	7 00	
Campanula divaricata. Carolina Harebell.....	1 00		
Carex fraseri. Fraser's Sedge.....	1 00	7 00	
Cassia marylandica. Tr.....	75	4 00	
Collinsonia canadensis. Strong.....	75	5 00	
Chamaelirium luteum. Blazing Star.....	75	5 00	
Cimicifuga americana. American Bugbane.			
Strong.....	75	6 00	
<i>racemosa.</i> Black Snakeroot. Strong.....	60	5 00	
Clintonia borealis. Yellow Clintonia.....	60	5 00	
<i>umbellata.</i> White Clintonia.....	60	5 00	
Coreopsis lanceolata. Lance-Leaved Tickseed.			
Clumps.....	75	5 00	
<i>major.</i> Wood Tickseed. Clumps.....	1 00	7 00	
<i>rosea</i>	75	5 00	\$35 00
<i>verticillata.</i> Whorled Tickseed.....	75	5 00	
Diphyleia cymosa. Umbrella Leaf.....	1 00	7 00	
Disporum lanuginosum. Hairy Disporum.....	1 00		
Eupatorium ageratoides. White Snakeroot.....	75	5 00	
<i>perfoliatum.</i> Common Thoroughwort.....	75	5 00	
<i>purpureum.</i> Trumpet Weed.....	75	6 00	
Euphorbia corollata. Flowering Spurge.....	75	5 00	
Gentiana andrewsii. Closed Gentian.....	60	4 00	30 00
Geranium maculatum. Alum Root.....	60	4 00	
Geum radiatum. Mountain Avens.....	1 00		
Helenium autumnale. Col. Cl.....	60	4 00	30 00
Helianthus stramosus. Wood Sunflower.....	60	4 00	30 00
Hepatica acuta. Sharp-lobed Hepatica.....	75	5 00	
Heuchera americana. Alum Root.....	75	5 00	
<i>villosa.</i> Hairy Heuchera.....	75	5 00	
Hibiscus, 3 vars. mixed. Stg. S.....	60	3 00	
<i>crimson-eye.</i> Clumps.....	75	5 00	
<i>moseheutos.</i> Swamp Rose Mallow. 2 yr. S.....	60	4 00	
Clumps.....	1 00	7 00	
<i>rose-pink.</i> 1 yr. S.....	60	4 00	
Clumps.....	1 00	7 00	
Houstonia purpurea. Col. Cl.....	75	5 00	
Hydrastis canadensis. Golden Seal.....	75	6 00	
Iris cristata. Crested Dwarf Iris.			
Strong Collected Plants.....	50	3 00	15 00
Clumps.....	1 00	7 00	50 00
<i>verna.</i> Dwarf Iris. Collected Clumps.....	75	4 00	35 00
Lacinaria pycnostachya. Button Snake.....	1 00	6 00	
<i>scariosa.</i> Strong S.....	75	5 00	
<i>spicata.</i> Devil's Bit. Strong S.....	60	4 00	
Clumps.....	1 00	6 00	
<i>spicata pumila.</i> Strong S.....	60	3 00	25-00
Clumps.....	1 00	6 00	
<i>montana</i>	1 00	6 00	
Leptandra virginica. Culver's Root.....	1 00		
Leucocorinum montanum.	2 00		
Lobelia cardinalis.	75	5 00	
<i>syphilitica.</i>	75	5 00	
Melanthium parviflorum.	75	5 00	
<i>virginicum.</i> Strong.....	75	5 00	
Mimulus ringens. Col Cl.....	60	4 00	
Monarda didyma. Oswego Tea.....	1 00	6 00	
Panax quinquefolium. 3rd size.....	60	4 00	35 00
2nd size.....	1 00	7 00	
1st size.....	1 50	11 00	
X size.....	2 50	20 00	
XX size.....	4 00	35 00	
Panax quinquefolium Seed.—Write for prices.			
Potentilla tridentata. —See under Ground-covering Plants.			
Prunella vulgaris. Col.....	60	4 00	
Phlox maculata. Clumps.....	75	5 00	



Stenanthium robustum. Mountain Feather Fleece. From a photograph taken at Highlands Nursery. (See page 23)

HERBACEOUS PERENNIALS, continued

	Per 10	100	1,000
Physostegia virginiana , Lion's Heart. Strong S.	\$0 60	\$4 00	
Strong.....	1 00	6 00	
<i>virginiana alba</i>	1 25		
Podophyllum peltatum , May Apple.....	50	3 00	\$20 00
Polygonatum biflorum , Strong.....	60	4 00	
<i>commutatum</i> , Solomon's Seal. 1 yr. S.....	50	3 50	25 00
Strong.....	75	5 00	40 00
Porteranthus stipulatus , Light.....	75	4 00	
Strong.....	1 00	6 00	
Rhexia virginica , Deer Grass.....	1 00	7 00	
Sanguinaria canadensis , Bloodroot.....	60	4 00	20 00
This is shipped entirely at consignee's risk.			
Saxifraga micranthidifolia , Lettuce Saxifrage.			
Clumps.....	1 00	6 00	
Scrophularia marylandica	1 50		
Sedum telephoides , Clumps.....	1 00	7 00	
Shortia galacifolia , 2d size. Light.....	1 50	12 00	90 00
1st size.....	3 00	25 00	

KELSEY'S Hardy American Plants

Rhododendrons and Azaleas

HERBACEOUS PERENNIALS, continued

	Per 10	100	1,000
Silene stellata. Starry Campion.....	\$0 75	\$5 00	
virginica. Fire Pink. Strong.....	1 00	8 00	
Solidago, following varieties: bicolor, boottii, canadensis, erecta, glomerata, patula, pu- bens, rugosa.....	75	5 00	
Spigelia marylandica	1 50	12 00	
Stachys aspera	60	4 00	
Steironema ciliatum. Fringed Loosestrife.....	60	4 00	
Stenanthium robustum. Stout Stenanthium.			
1 yr. S.....	50	4 00	\$30 00
3d size.....	1 00	7 00	50 00
2d size.....	1 50	12 00	90 00
1st size.....	2 50	20 00	
Stokesia cyanea	1 00	8 00	
Thalictrum dioicum. Early Meadow-Rue.....	60	4 00	
Thermopsis caroliniana. 1 yr. S.....	75	5 00	35 00
2 yr. S.....	1 00	7 00	
Strong.....	1 50	10 00	
Therofon aconitifolium. Aconite Saxifrage.			
Clumps.....	75	6 00	
Tradescantia pilosa. Zigzag Spiderwort.....	75		
montana.....	1 25		
Trautvetteria carolinensis. False Bugbane.....	50	4 00	
Uvularia perfoliata. Perfoliate Bellwort.....	75	5 00	
sessilifolia. Sessile-Leaved Bellwort.....	75	5 00	
grandiflora.....	1 00	7 00	
Vagneria racemosa. Wild Spikenard.....	75	5 00	
Veratrum viride. Strong.....	75	5 00	
Vernonia noveboracensis. Iron-Weed, Col. Cl. ..	1 00	7 00	
Viola blanda	75	5 00	
canadensis. Canada Violet.....	75	5 00	
cucullata. Col. Cl.....	50	4 00	
palmata. Early Blue Violet.....	75	5 00	
pedata. Bird's Foot Violet.....	75	5 00	
pedata bicolor.....	1 50	12 00	90 00
rotundifolia.....	75	6 00	
sagittata.....	75	5 00	
Yucca filamentosa. Broad Leaf Type. Adam's Needle. Stg.....	1 50		
Clumps.....	2 00		
filamentosa. Adam's Needle. Stg.....	75		
flaccida. Light.....	50	3 00	25 00
Stg. Cls.....	75	6 00	50 00
glauca. Tr.....	1 50	8 00	
Zerophyllum asphodeloides. Turkey Beard.			
Clumps.....	1 50	10 00	
Zigadenus leimanthoides	1 50	12 00	

We have the Finest and Only Large
Stock of Hardy American Azaleas
and Rhododendrons in Existence.



Rhododendron maximum *Rhododendron catawbiense* *Rhododendron punctatum*
Photograph showing comparative sizes and shapes of our three best species of
American Rhododendron. One-third to one-half natural size

**We have the Finest and Only Large
Stock of Hardy American Azaleas
and Rhododendrons in Existence.**